

Reversion	Engineering Change Description	Date	Owner
A/0	NEW	2015.11.10	ZXM

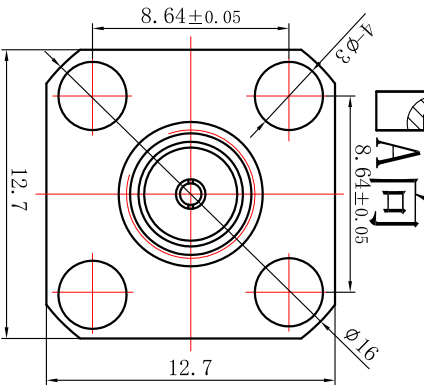
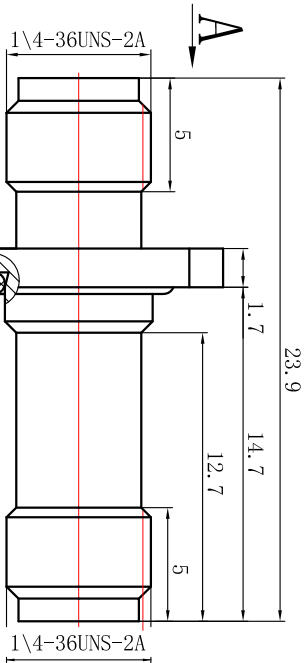
Electrical performance		
Characteristic impedance	50 Ω	
Frequency range	DC to 8 GHz	
Standing wave ratio(VSWR)	≤1.12 (DC~6G)	
withstand voltage	≤0.2dB@8G	
working voltage	335 V rms	
Test voltage	1000 V rms	
Insulation resistance	≥5000MΩ	
Center pin contact resistance	≤3mΩ	
Conductor contact resistance	≤2.5mΩ	
Center conductor retention force	≥0.28N	
Intermodulation 3rd order	N/A	




Mechanical and environment		
Tempreture range	-40~+155℃	
Salt spray test time	48H	
Airtight	N/A	
durability	≥500 cycles	

Materials		
Connector parts	Material	Plating
Center contact	QBe	Au
Outer contact	brass	Au
Dielectric	PTFE	

CAD GENERATED DRAWING,  
DO NOT MANUALLY UPDATE

Any statements in this article shall not be interpreted as suggesting infringement of existing patents. Individual values may vary depending on factors including but not limited to application, design, cable type, assembly, and others workmanship



STANDARD TOLERANCES (unless stated otherwise)				Product design		 戴盛通信 Dashing Com-Tek Co., Ltd	
Geometric tolerances	Positional tolerance			Design		TITLE:  SMA-50KKF	
		X	.X	Drawn			
	0-6	±0.1	±0.05	Workmanship			
	6-10	±0.1	±0.05	Checked			
	10-30	±0.15	±0.10	Approvals			
ANGLE ±1°	>30	±0.15	±0.10	As mension	 	Drawing No. :  DS3. 650. 1256	
Scale:							
Company website: <a href="http://www.daisheng.net">http://www.daisheng.net</a> / Email: <a href="mailto:ds168@daisheng.net">ds168@daisheng.net</a>							