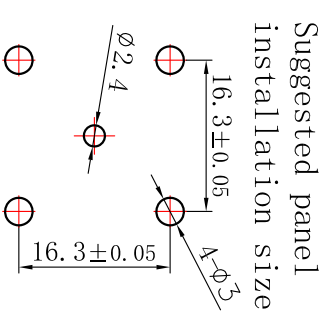
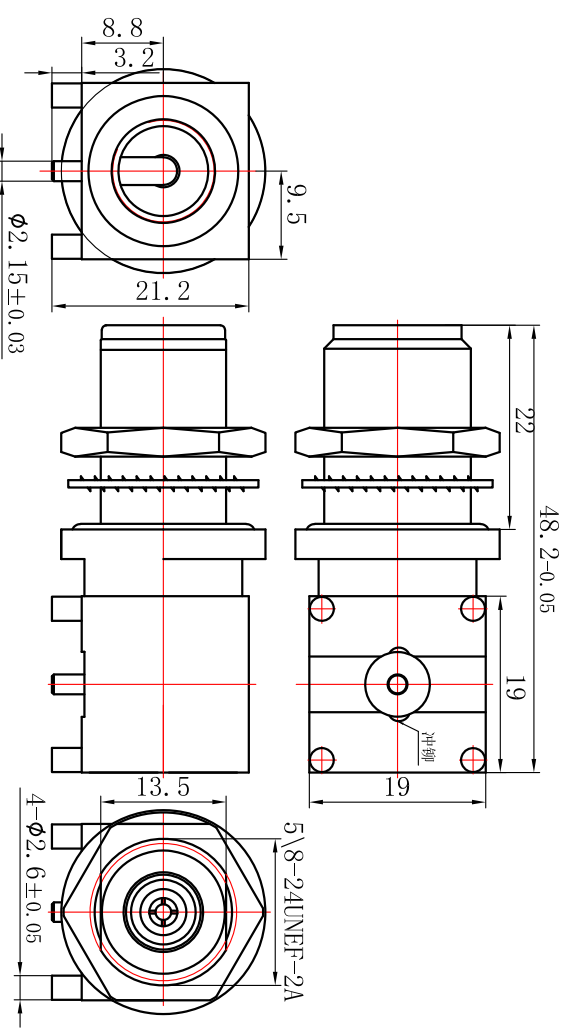



Reversion	Engineering Change Description	Date	Owner
A/0	NEW	2023.07.24	ZXM

Electrical performance	
Characteristic impedance	50 Ω
Frequency range	DC to 8 GHz
Standing wave ratio(VSWR)	≤1.15 (DC~8GHz)
withstand voltage	≤0.1 x √f (GHz) dB
working voltage	1000 V rms
Test voltage	2500 V rms
Insulation resistance	≥5000M Ω
Center pin contact resistance	≤1m Ω
Conductor contact resistance	≤1m Ω
Center conductor retention force	≥0.56N
Intermodulation 3rd order	N/A
Mechanical and environment	
Temperature range	-40~+85℃
Salt spray test time	96H
Airtight	N/A
durability	≥500 cycles
Materials	
Connector parts	Material Plating
Center contact	bronze Au
Outer contact	brass CuSnZn
Dielectric	PTFE
Seal ring	Red silicone rubber
Nut	brass CuSnZn
Grommet	bronze CuSnZn



CAD GENERATED DRAWING,
DO NOT MANUALLY UPDATE

Any statements in this article shall not be interpreted as suggesting infringement of existing patents. Individual values may vary depending on factors including but not limited to application, design, cable type, assembly, and others workmanship

STANDARD TOLERANCES (unless stated otherwise)		Product design	
Geometric tolerances	Positional tolerance	Design	Drawn
		Workmanship	Checked
ANGLE ±1°	X	Workmanship	Approvals
	.X	As mension	
Scale:			
Company website: http://www.daisheng.net / Email: ds168@daisheng.net		 戴盛通信 Dashing Com-Tek Co., Ltd TITLE: M-50KYWHD3 Drawing No.: DS3.650.2830	